



Caring for Nature in Middlesex

Landowner Action in Carolinian Canada

What does nature mean to landowners?

Farmers and rural landowners in Middlesex have strong ties to the land, going back centuries. Today, the region farmers grow wheat, soybeans, corn, tomatoes, strawberries and a wide variety of other crops. Farm-related businesses employ 18% of the county's workforce. Farmers understand that their livelihood depends on healthy soils and clean water. These resources, in turn, are dependent on a healthy and diverse landscape with wetlands, woodlands, hedgerows and buffers around watercourses. Many Middlesex landowners work with the **Ontario Soil and Crop Improvement Association** to access financial incentives to convert to low or no-till cropping; manage their nutrient program for cleaner water; or create stream buffers to conserve soil. Others plant woodland and prairie habitats with help from the **Middlesex County Stewardship Network** or one of the **Conservation Authorities** such as the **Ausable Bayfield, Lower Thames Valley and St. Clair Region**. Rural and urban landowners involved in habitat projects enjoy improved soils, enhanced recreation and wildlife watching. They are proud of the part they play in maintaining the unique natural beauty of southwestern Ontario.



The Carolinian Life Zone of southwestern Ontario stands out as one of Canada's natural treasures. The Tulip Tree Leaf is a symbol of many unique wild plants and animals that live here and as far south as the US Carolinas.

Caring For Nature factsheet series is published by the Carolinian Canada Coalition
www.carolinian.org • 519-433-7077

The Unique Nature of Middlesex

Located on the cusp of the Carolinian Life Zone, one of North America's hotspots of natural diversity, Middlesex reflects the transition between southern and northern habitats. Lush deciduous forests typical of the south are found alongside pockets of bogs and fens, more typical of the north. Several major rivers, including the Thames, one of the largest and most biologically-rich rivers in Ontario, criss-cross the county. Woods, wetlands, meadows and scrublands support the great variety of wildlife in Middlesex. The Wood-poppy, an endangered wildflower, is found only in Middlesex. Other species at risk include the Acadian Flycatcher, the Kentucky Coffee-tree and the American Badger.

Middlesex is also home to many dedicated, community-based groups that are active in restoring and protecting natural landscapes. Groups such as **Friends of Dingman, Stoney, Oxbow, and Sharon Creeks, Enviro-Friends of Coldstream** and many more tireless volunteers contribute to the quality of their natural environment and their communities.



Volunteers install fish habitat on Gunn Farm

Saving Our Stream: A Community Effort on Gunn Farm

Medway Creek takes a sharp bend on Gunn farm near Arva. Over the years, the fast-moving water has caused severe bank erosion, cutting into valuable farmland. In October of 2006, students from the **University of Western Ontario** worked with the **Upper Thames River Conservation Authority** to install 'LUNKERS' (Little Underwater Neighbourhood Keepers Encompassing Rheotactic Salmonids), hardwood compartments embedded in the stream and held in place with reinforcing rods and stones. They provide quiet fish habitat in the fast-moving stream and protect the bank from erosion. Volunteers of the **Arva Conservation Club** helped plant trees and shrubs along the stream to enhance the natural beauty and biodiversity on the farm. The project will help improve water quality, farm fields and fish habitat – a win-win-win, for the property-owners, community and wildlife.

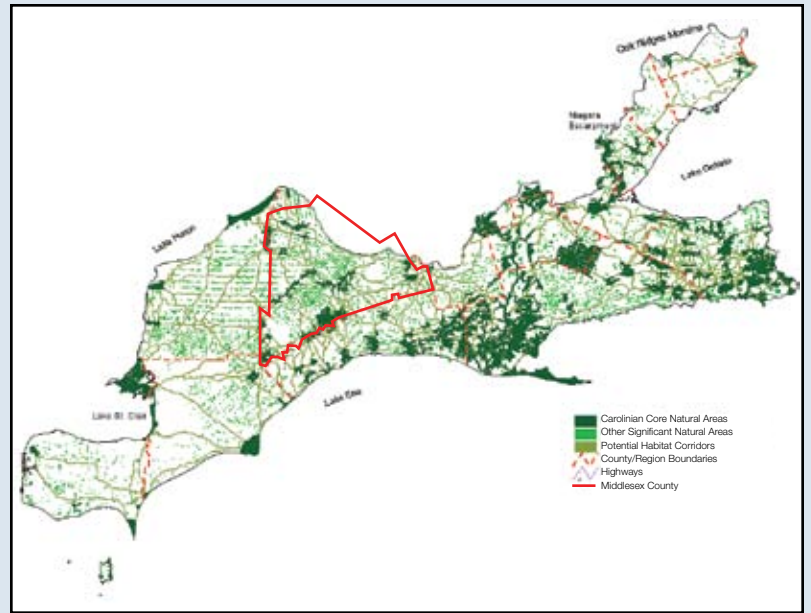


The Big Picture in Middlesex

Healthy landscapes need large Core Habitats connected by Natural Corridors. This type of natural system benefits both wild and human communities. Federal guidelines recommend that 20 - 30% natural cover is needed for landscapes to stay healthy and sustainable. In Middlesex, natural cover is 12.3%.

The *Big Picture* is Carolinian Canada Coalition's vision of a network of green spread out across the Southwestern Ontario landscape. Existing natural areas, such as forests, wetlands and meadows form the backbone of the system. These are connected by streams, rivers, drains, hedgerows, smaller woodlands and even backyard habitat. It shows how Middlesex natural areas can be conserved and linked across the landscape with the help of public and private stewards.

The *Big Picture* shows 140 core natural areas that act as important reservoirs of natural diversity across the zone. Fourteen are found in Middlesex County.



Significant Natural Area

Red Mulberry. A network of conservation partners is now working closely with the landowners to plan and fund habitat projects that will help to improve property values.

Middlesex Landowners Contribute to Natural Heritage Study

In 2001, the **County of Middlesex** asked 68 private landowners, five **Conservation Authorities** working within its boundaries and the **Ministries of Natural Resources** and **Municipal Affairs and Housing**, to participate in a coordinated natural heritage study in Middlesex County. The County recognized the need to develop a solid information base for the protection and rehabilitation of our natural heritage. At the same time, many landowners were interested to know what wild species and habitats were on their land.

The study, by **Upper Thames River Conservation Authority**, found that private landowners are proud stewards of important Middlesex heritage. Over 70% of their woodlands are significant and several landowners were excited to find rare species such as Kentucky Coffee-tree, the native Dense Blazing Star, Drooping Trillium and

The study recommends a broad-based approach to build stewardship support for landowners in tandem with natural heritage policy to achieve an 18% increase in forest cover. This aim would restore the balance needed on the landscape to protect habitat, water, air and soil quality for future generations.

Visit www.carolinian.org to zoom in on any part of the Big Picture and find out more about habitat cores and corridors in your area.

Join a Friend and Lend a Hand for Conservation



Planting shrubs for wildlife

Friends of the Coves Subwatershed Inc. was formed by a concerned group of neighbours who wanted to protect the Coves Environmentally Significant Area in London. They developed a unique science-based plan to restore the natural habitat of this largely privately-owned area. This plan has since been adopted by the City of London, Upper Thames River Conservation Authority, Old South Community Organization and landowners who have signed stewardship agreements.

Friends of the Coves, with the help of many volunteers, has organized plantings to help protect waterways and establish wildlife corridors. Swallowtail Grove, their butterfly garden in Greenway Park, contains native trees, shrubs, flowers and grasses and an interpretive sign that explains their benefits. Native plants are low maintenance when they are planted in appropriate locations. Backyard habitat gardens are incredibly important because even deep in the city, pockets of otherwise hard-to-find native plants provide refuges for birds, butterflies, bees and other wild critters – it's a secret best shared!

Working Together for Conservation

*These are just a few of the many groups working to protect habitat in your region.
See the back page for more Conservation Partners.*

Rare Birds in Your Chimney

The Mcllwraith Field Naturalists play an active role in preserving nature. The club owns and stewards Cedarcroft, an 11 ha (27 ac) nature reserve along the Thames River with hardwood forest, a pine plantation, deep ravine, creek and riparian habitats. For more than a decade, they have operated Project Peregrine, monitoring breeding Peregrine Falcons on a nesting ledge on the Wellington Street TD Canada Trust building in London. A more recent program, known as SwiftWatch, involves volunteers monitoring Chimney Swifts, threatened birds that use London chimneys for summer breeding and fall roosts. The club helps the community learn about local natural heritage with inventories, a guide to natural areas, outings, lectures and workshops.

Conservation Authorities and Landowners Grow Healthy Landscapes

For over 30 years, thousands of private landowners have worked with Conservation Authorities to improve water quality and Middlesex's unique habitat. The authorities offer community partnerships and technical advice, on-site visits, financial incentives and various educational workshops. They help plan private and demonstration projects such as watercourse buffers, wetland and woodland plantings, livestock management improvements and other Clean Water projects that contribute to sustainable agriculture operations and community health. A major focus is restoring native trees to the landscape, as they provide many environmental benefits including clean water, clean air, improved soil and wildlife habitat.



Saving Mill Pond Heritage

In 1984, upon the opening of a trail, a small, dedicated group made it their goal to protect and conserve the local mill pond in a natural state and formed the **Dorchester Mill Pond Committee**. Working with surrounding homeowners, schools and community leaders, the group has protected and restored habitat and helped the pond evolve into a natural paradise for local recreation and wildlife. Linked to a Big Picture core site, the Dorchester Swamp, and the Thames River, this little pond has great natural heritage value. Over the years, the Committee has produced a biological inventory, guides and workshops and provided advice for natural heritage issues in the Dorchester area.

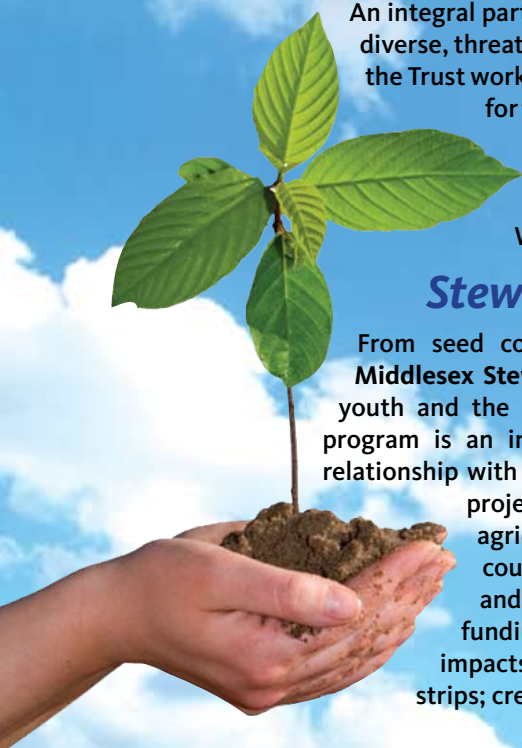


A Legacy of Conservation

An integral part of the **Thames Talbot Land Trust's** mandate is to conserve and restore the highly unique, diverse, threatened landscape of the Carolinian Life Zone. Much of the landscape is privately owned, and the Trust works with landowners to ensure that conservation and careful stewardship will be their legacy for future generations. The Trust is a great resource to help landowners explore land easements, donations and other creative options linking conservation and financial benefits. The Trust has worked together with caring landowners to establish several important new nature reserves in the county including Joany's Woods near Sylvan, Newport Forest near Wardsville, and Meadowlily Nature Preserve in London.

Stewardship Council Forests for Life

From seed collection to school greenhouses to tree planting, the **Middlesex Stewardship Council** engages diverse community members, youth and the developmentally-challenged to green the county. This program is an inspiring model for how a community can improve its relationship with the natural environment. It is just one of many Council projects that promote and demonstrate good stewardship of agricultural and natural resources in Middlesex County. The council partners with private landowners, community groups and agencies that respect private land ownership to access funding and assistance for projects with positive environmental impacts such as planting trees, shrubs or tallgrass prairie as buffer strips; creating wetlands; or enhancing species at risk habitat.



The Natural Wonders of Middlesex County

Habitat Best Left Alone

In 1968, the Kanters bought 4 ha (10 ac) of pasture and Carolinian swamp-forest near Dorchester Swamp. They used a 'hands-off' management approach, enjoying the property's natural beauty and walking trails, while raising a few horses and a cow on the pasture. Today, the mature forest is teeming with wildlife. Three years ago, Doris Kanter converted the pasture to a native tallgrass prairie, with the help of consultant Mathis Natvik and a grant from the Ontario Wetland Habitat Fund. *'The soil is pure sand', says Doris, 'and has good potential for the development of an oak savanna.'*

Nairn Creek Landowners Set "Amazing Pace"

Along Nairn Creek, near Denfield, the **Ausable Bayfield Conservation Authority (ABCA)** asked landowners to help plant buffers along the creek where it ran through their land. ABCA set a goal of 5 km of buffers over 10 years, but landowners stepped up to the plate and planted 8 km of buffer in less than 3 years. The trees will grow up and shade the creek, increasing habitat for Brown Trout in this coldwater stream. The buffers will also help to keep the stream clear of sediment and reduce pollutants from run-off.

"The Nairn Creek area landowners really set an amazing pace and we thank them for continuing to plant even after the initial target has been reached," says Mari Veliz, with ABCA. *"I think the residents understand they have good water quality and they are working hard to protect the resource that they have."*



Trees Help Clean Mussel Habitat in the Sydenham

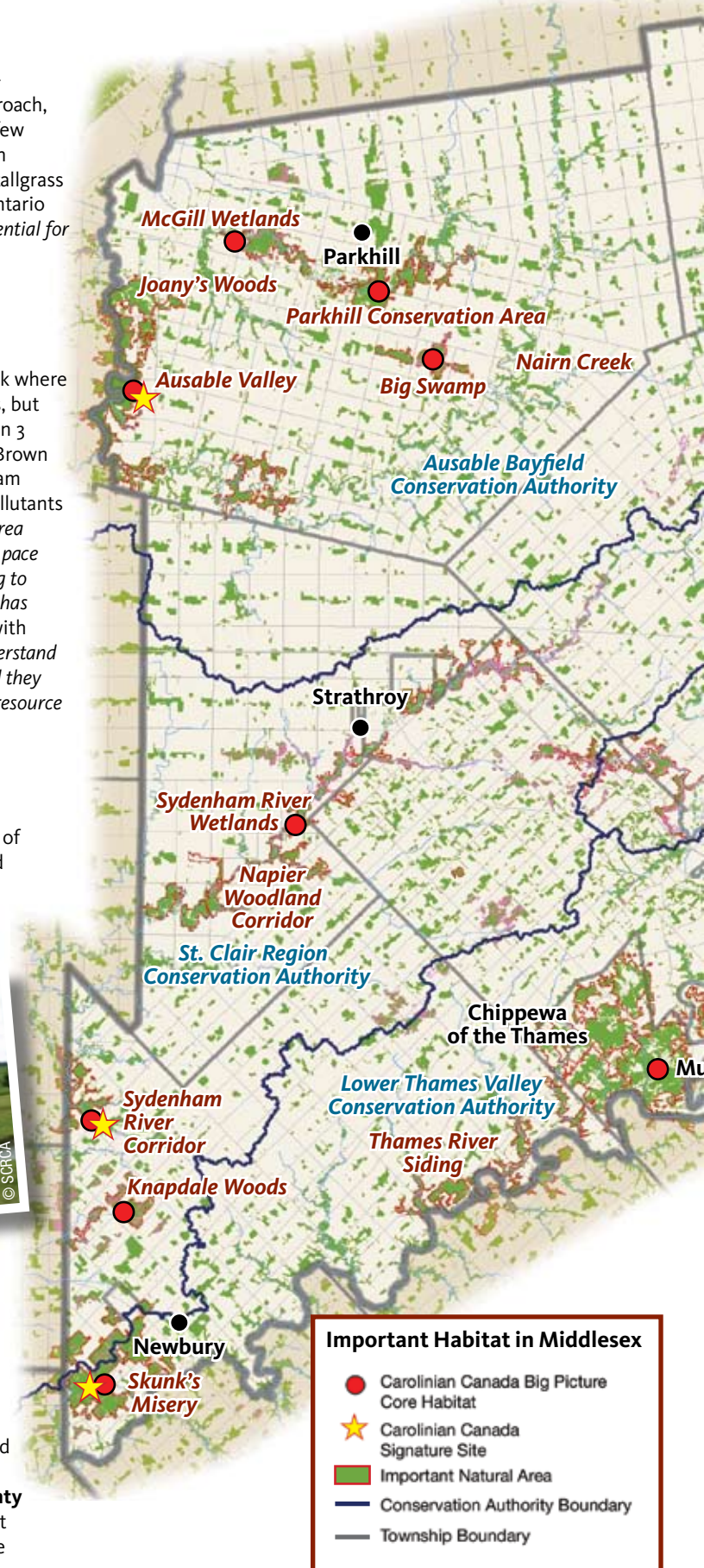
Dave Siddall lives on the upper reaches of the Sydenham River northwest of Ilderton. In 2003, he decided to remove his cattle from the floodplain and naturalize 4 ha (10 ac) of pasture. Over 5,000 native trees and shrubs have been planted along the river on his property with the help of the **St. Clair Region Conservation Authority**, reducing sediment and nutrient input into the river. The Sydenham is nationally significant for its mussel diversity, with over 32 species of native freshwater mussels. Many are species at risk and globally rare due to changing aquatic environments. Dave's floodplain project connects his upstream woodland to the natural river banks downstream and improves water quality in this important aquatic habitat.

Siddall Sydenham naturalization



Southwestern Ontario's Natural Paradise

A small Presbyterian church in Wardsville has practiced careful selective logging over two decades to protect Skunk's Misery. This unique name conjures up a past when swamps dominated the landscape. Now, at 1,215 ha (3000 ac), it is one of the largest woodlands in southwestern Ontario, protecting the headwaters of the Thames and Sydenham Rivers and stretching from Newbury to Bothwell. Rare wetland, prairie and woodland ecosystems are stewarded by over 50 private landowners, as well as, the **Lower Thames Valley Conservation Authority** and the **Middlesex County Woodland Advisory Committee**, a group of caring citizens that uses best woodland management practices to sustain the site's rich natural heritage and community values.



Important Habitat in Middlesex

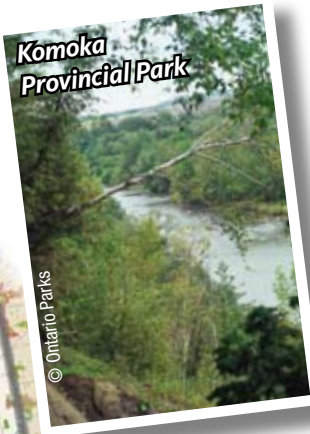
- Carolinian Canada Big Picture Core Habitat
- ★ Carolinian Canada Signature Site
- Important Natural Area
- Conservation Authority Boundary
- Township Boundary

These folks and other neighbours too numerous to mention are quietly helping to restore our landscape, to protect rare wildlife, and to make your home a safer place to live by keeping the air and water clean. You can help too, in many ways.



Making Connections in Delaware

The Vanos family of Delaware created a diverse landscape on their 8 ha (20 ac) property when they retired it from corn and soybean production. They planted a forest of native trees and shrubs of varying sizes, built a large pond and used a native wildflower and grass seed mix to establish a beautiful meadow for wildlife. Through the **Upper Thames River Conservation Authority's** Communities for Nature program, the project provided an opportunity for local youth to learn about their environment and help restore important habitat. Their property is now a part of a natural network that includes the Delaware East Woodland and Lower Dingman Environmentally Sensitive Areas.



Explore Nature in Komoka

Komoka Provincial Park, located along the scenic shores of the Thames River west of London, is an important wildlife refuge and corridor. The flora of this unique area is a mix of southern, western and northern influences with deciduous forest, prairie and boreal habitats. In the park, a wide variety of rare plants and wildlife find a home, including Golden Eagle, Southern Flying Squirrel, the threatened Eastern Spiny Softshell Turtle and the Water Star-grass. This picturesque area offers visitors opportunities to explore the extensive trail network throughout the year.

Planting the Forest City

ReForest London has partnered with more than 5,400 volunteers since 2005 to plant 6,000 native trees in parks, natural areas, schoolyards, and neighbourhoods throughout the City. The group encourages people to become more involved in creating a healthy environment by sharing expertise and providing organizational support. Matching funds are available to groups that want to plant trees in their neighbourhoods.



Drought-Proofing Dodd Creek

In early 2007, the **Kettle Creek Conservation Authority** was asked to help create a 0.75 ha (1.9 ac) wetland on the Martin property alongside Dodd Creek. Over 1,500 native Carolinian tree and shrub species were planted and today, the habitat is thriving and used by a wide variety of mammals, birds and amphibians. Wetland projects are significant to Dodd Creek as it is a major tributary of Kettle Creek and relies largely on surface water recharge. The Martin wetland will release clean water slowly into Dodd Creek over the dry summer months, augmenting flow at a time when it is most needed. Planting trees bolsters forest cover, cleans air, filters water and protects soil from erosion.


Explore more habitat projects and ideas in Carolinian Canada's Big Picture Network at www.carolinian.org

Why Should I Care? *Natural habitat benefits city and rural homes, farms and communities with important landscape functions.*

Climate Survival

A healthy, natural landscape is our primary survival toolkit in a warming world and uncertain future

Clean Air

Natural habitat filters air, provides oxygen and mitigates the urban heat island effect

Green Infrastructure

A linked natural network has proven economic, health and psychological benefits as well as being essential to ecological health

Productive Land

Natural habitat builds soil quality and prevents erosion

Diversity of Life

Wild places provide beautiful landscapes, natural pest control and homes for wildlife

Energy Savings & Safety

Trees protect buildings and residents from extreme heat, cold, wind and noise

Healthy Communities

Studies show that people are happier and property values increase around natural areas

Clean Water

Wetlands and buffers filter water, reduce pollution and guard against floods and droughts

What Can I Do? *Stewardship Tips for Rural and Urban Landowners*

Whether your land is large or small, contains natural features or is currently manicured, you can contribute to natural heritage protection. As you get to know your property, rural or urban, in all seasons, you will know best what it needs to stay healthy.

AROUND THE HOME

Carolinian Canada In My Back Yard

Attract butterflies, hummingbirds and song birds to your garden by growing low-maintenance native plants. Mix it up with a variety of species and structures – a key Carolinian characteristic is high natural diversity.

Nature at Home

Nurture that towering tree or protect a habitat corner from disturbance. Resist the desire to ‘clean it up’– leaf litter, gnarled branches, old logs, tall grass and winter gardens are important for diverse and interesting wildlife. Join a wildlife monitoring program to learn more about your property and contribute to science.

Eliminate Toxins & Save your Money

Grow a lawn safe for kids and wildlife. Use organic fertilizers such as compost, lawn clippings and leaves. Pesticide alternatives are less expensive too. Reduce water use and maintenance by replacing lawn with native ground covers.

Nature Knows Best

Avoid planting or dumping in natural areas. Although often well intended, introduced plants, compost and clippings can smother, invade or otherwise damage natural ecosystems. Avoid exotic plantings near natural areas.

AROUND THE COUNTRYSIDE

Balance the Landscape

Plant native species next to existing natural areas to multiply their benefits. Create undisturbed interior forest or tallgrass prairie habitats, both rare in Carolinian Canada.

Make Connections

Work with neighbours to grow habitat linkages along fences, roads, watercourses and drains. Locate new trails strategically to restore green corridors in rural or urban communities, rather than impacting existing natural areas.

Water is Life

Plant natural buffers on slopes and shorelines to protect water quality and aquatic ecosystems. The wider the buffer, the greater the benefits.

Manage for Sustainable Income

Work with your local community or association to adopt Best Management Practices (BMP's) for timber, tourism, agriculture, recreation and other industries. BMP's help wildlife and also protect long term economic value.

Plan it Right for Love and Money

Consult a habitat specialist to develop a plan for your backyard or back 40. With a plan, you may be eligible for a variety of conservation grants and incentives.

THE PRIDE OF MIDDLESEX

Landowners Help Rare Species

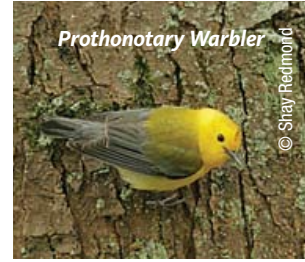
Local landowners are taking pride in helping rare species, an important part of Middlesex heritage. The endangered Eastern Prairie Fringed Orchid and the endangered Acadian Flycatcher, for example, are surviving thanks to cooperative and voluntary private stewardship actions.

What are They?

Species at risk are plants or animals in danger of disappearing from the wild. More than 56 Middlesex species are officially listed 'at risk' for Canada and 211 for Ontario, among the highest levels in the nation. Local recovery teams are working with experts and community members to protect critically rare species, habitats and landscapes that support them.

Rare Gems of Nature Close at Hand

Many fascinating and rare wild neighbours are found across the county. Middlesex is the only place in Canada where the endangered Large Whorled Pogonia is found. Rare animals include the Southern Flying Squirrel and the threatened Queen Snake. Fish with intriguing names like Silver Shiner and Eastern Sand Darter live in Middlesex creeks and rivers along with the endangered Snuffbox and Mudpuppy Mussels. Remember to stay on marked trails when visiting conservation lands to avoid damaging rare species or their habitats.



Prothonotary Warbler

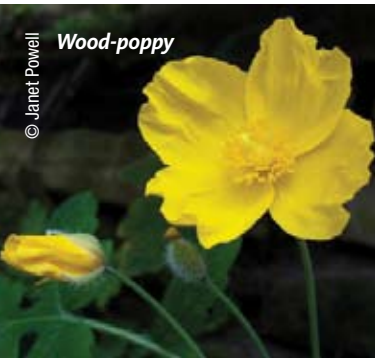
© Shiray Redmond



Silver Shiner

The Wood-poppy: Unique to Middlesex

The Wood-poppy, with its spectacular yellow flower, is an endangered species that is truly a part of Middlesex heritage - the only Canadian population is found here. No one had recorded it for about 90 years when it was rediscovered along the Thames River in 1987. Now three locations with a total of about 450 plants are being carefully stewarded. Two of the sites are privately owned. Landowners are the key to species at risk recovery and the landowners of all three sites are members of the Recovery Team.



Wood-poppy

© Janet Powell

Carolinian Canada has 1/3 of the country's species at risk, many of which live in Middlesex. Mention this factsheet to get a free Wild Neighbours Kits from info@carolinian.org or 519-433-7077.



Wanted Alive in Middlesex! You can help! Call if you see these species.

Free Downloads: NEW *Wanted Alive* posters for Carolinian Canada counties at www.carolinian.org

EASTERN SPINY SOFTSHELL TURTLE

(*Apalone spinifera*)

ENDANGERED

Look for:

- A "pancake turtle" with a flat, leathery spotted shell
- Long snout

Did You Know?

This turtle ambushes fish, crayfish & mussels by lying concealed in bottom mud - Uses its snorkel-like nose to breathe while submerged - Is at risk from water pollution, pet trade & raccoons - Fewer than 2,500 left in rivers & lakes of Ontario & Quebec

HELP! Protect natural shorelines & beaches - Don't disturb nests, young or adults

REWARD: Adds to the diversity of the Thames River

IF YOU SEE THIS ANIMAL CONTACT:

wildlife@carolinian.org or Scott Gillingwater, Spiny Softshell Recovery Team @ 519-495-0400



© J. Tiedje

RED-HEADED WOODPECKER

(*Melanerpes erythrocephalus*)

SPECIAL CONCERN

Look for:

- Bright crimson head
- White belly, black back and white wing patch

Did You Know?

This woodpecker nests in cavities of dead snags and dying trees in open deciduous woods - Is attracted to peanuts and suet - Is at risk due to habitat loss from logging, firewood cutting and dead-tree removal

HELP! Leave snags and cavity trees in your woodlot

REWARD: Forest pest control

IF YOU SEE THIS ANIMAL CONTACT:

wildlife@carolinian.org or Jody Allair, Bird Studies Canada 519-586-3531, ext. 21



© Jim Flynn

Find a Habitat Partner in Middlesex

A Helping Hand for Landowners

A Good Place to Start for Property Assistance

Ausable Bayfield Conservation Authority abca.on.ca
1-888-286-2610 Habitat conservation & restoration

Kettle Creek Conservation Authority kettlecreekconservation.on.ca
519 631-1270 Habitat protection & tree planting

Lower Thames Valley Conservation Authority
lowerthames-conservation.on.ca
519 354-7310 Habitat protection and tree planting

Middlesex Stewardship Council ontariostewardship.org
Cale Selby 519-773-4785 Habitat conservation & restoration

St. Clair Region Conservation Authority scrca.on.ca
519-245-3710 Habitat protection and tree planting

Upper Thames River Conservation Authority thamesriver.on.ca
519-451-2800 Habitat protection, tree planting and restoration
Middlesex Natural Heritage Study

Specialized Project Assistance or Funding

Clean Water Program cleanwaterprogram.ca
Technical and financial assistance for landowners

Conservation Land Tax Incentive Program 1-800-268-8959

Ducks Unlimited Canada ducksunlimited.org
1-888-402-4444 Wetland protection and creation

Evergreen 1-888-426-3138 evergreen.ca Native Plant Database
Schoolyard habitat and Rebuilding Nature Grants

Nature Conservancy of Canada natureconservancy.ca
Heather Arnold 1-866-281-5331 Land protection, conservation easements
Conservation Volunteers

NatureWatch naturewatch.ca
Volunteer wildlife & environmental monitoring

Ontario Soil and Crop Improvement Association ontariosoilcrop.org
Margaret May 519-287-5334 Environmental Farm Plan

Ontario Forestry Association oforest.on.ca
1-800-387-0790 Ontario Managed Forest Tax Incentive Program

Ontario Ministry of Natural Resources mnr.gov.on.ca/mnr/speciesatrisk/
519-354-4108 Species at Risk Stewardship Fund

ReForest London reforestlondon.ca 519-936-9548

Tallgrass Ontario 519-837-4631 tallgrassontario.org
Prairie and Savanna conservation

Thames Talbot Land Trust ttl.ca 519-858-3442

Meet Your Neighbours ~ Learn, Volunteer, Network

Association for Canadian Educational Resources
905-275-7685 Volunteer habitat monitoring aceracre.org

Bird Studies Canada 1-888-448-2473 bsc-eoc.org
Project FeederWatch and more

Dorchester Mill Pond Committee 519-451-2800
thamescentre.on.ca/millpond.htm

Enviro-Friends of Coldstream middlesexcentre.on.ca 519-666-0190

Friends of the Coves thecoves.ca 519-640-5397

Friends of Dingman, Stoney, Oxbow or Sharon Creeks
thamesriver.on.ca 519-451-2800

McIlwraith Field Naturalists of London mcilwraith.ca
519-457-4593 environmental awareness, habitat protection and enhancement
Guide to the Natural Areas of London & Vicinity

Ontario Federation of Anglers and Hunters invasingspecies.com
1-800-563-7711 Invasive species hotline, Habitat enhancement

Ontario Nature 1-800-440-2366 ontarionature.org
Volunteers for Nature, Birds on the Farm: A Stewardship Guide

Good Sources of Information

Canadian Wildlife Federation wildaboutgardening.org

Environment Canada 1-800-668-6767

Species at Risk sararegistry.gc.ca

Ecological Gifts Program on.ec.gc.ca/wildlife/ecogifts

Middlesex Federation of Agriculture 519-457-8444

North American Native Plant Society 416-631-4438 nanps.org

Ontario Ministry of Agriculture, Food and Rural Affairs omafra.gov.on.ca

Best Management Practices: Buffer Strips, Fish & Wildlife

Ontario Society for Ecological Restoration serontario.org

Native Plant Resource Guide

Ontario Woodlot Association 1-888-791-1103 ont-woodlot-assoc.org

Comprehensive resources for woodland management

Royal Ontario Museum rom.on.ca

Online factsheets on Species at Risk



CAROLINIAN CANADA COALITION

Collaborating for a Healthy Ecoregion

519-433-7077 www.carolinian.org

info@carolinian.org

Receive our FREE Email Newsletter

OTHER PUBLICATIONS:

- **New** The Natural Treasures of Carolinian Canada
- Species at Risk in Carolinian Canada & How to Help
- Big Picture Map
- Carolinian Canada Signature Sites Guide

NEW!

CARING FOR NATURE HANDS-ON

A New Workshop Series for Landowners

- Plan Your Habitat Project
- Get Ideas to Enhance your Property & Reduce your Ecological Footprint
- Meet Local Conservation Partners & Other Landowners
- Consult with Experts
- Find out about Funding & Assistance

519-433-7077 workshop@carolinian.org

Many thanks to our generous sponsors and stakeholders who were involved in the development of this factsheet.

Environment Canada EcoAction Community Funding Program provided major funding support for this project.

Muriel Andreae, Bonnie Carey,
Anita Caveney, Keith Early, Jaclyn Goodwillie,
Ruth John, Don McLeod, Cathy Quinlan,
Shay Redmond, Jim Rule, Cale Selby,
Mari Veliz, Donna Wakeling, Betsy Wilcox

Special thanks go to: Jane M. Bowles,
Terry Chapman, Doris Kanter, Craig Merkley,
Tara Tchir

Authors:
Karen May, Michelle Kanter, Nikki May
© Carolinian Canada Coalition 2008



THE ONTARIO TRILLIUM FOUNDATION
LA FONDATION TRILLIUM DE L'ONTARIO

UPPER THAMES RIVER
CONSERVATION AUTHORITY

